

IT9



**W&M Approved Industrial Weighing Terminal
for Challenging Weighing and Filling Applications**

Weighing electronics

For the connection of up to 10 scale bases with an input impedance of 43 Ohm–3.3 kOhm (suitable e.g. for 8 x 350 Ohm load cells), W&M approved resolution of 10,000 d (with a max. preload of 80 %). Internal resolution 524,000 d. Update rate selectable 50–1,000 updates / sec., sensitivity 0.2 mV/e.

Alternative connection via zener barriers with an input impedance of 87.5 Ohm–3.3 kOhm (suitable e.g. for 4 x 350 Ohm load cells), legal-for-trade resolution 6,000 d (with a max. preload of 80 %), sensitivity 0.33 mV/e.

Optional switching and summing function.
Optional connection of scale platforms with digital force transducers.

Calibration

Clear-text operator prompting. Setup as single- or multiple-range scale with 1, 2 or 3 ranges or as multi-interval scale. Calibration with test weights or by entry of rated load cell signal. Option for the linearization with up to 6 linearization points, option to connect an incline switch.

Power supply

Option: 100–240 V AC, 50–60 Hz via the integrated power supply unit or 12–24 V DC.
Power consumption AC max. 110 VA.
Power consumption DC max. 60 W.

Operating temperature

–10 °C to +40 °C, at 95 % max. relative humidity without condensation.

Construction/options:

Desk/wall version



- Stainless steel housing, IP65 / IP69K
- Suitable for desk-top or wall-mount installation
- Dimensions W x H x D:
345 x 274 x 124 mm
(13.6" x 10.8" x 4.9")

Panel-mount version



- Stainless steel housing, fascia plate protected to IP65 / IP69K
- Panel-mount installation
- Dimensions W x H x D:
306 x 259 x 68 mm (12.0" x 10.2" x 2.7")
- Cutout in panel:
288 x 241 mm (11.3" x 9.5")

socket (IP65/IP69K with cap screwed on) to connect PC keyboard, scanner, USB stick, etc.

Security

Power-fail-safe storage of data, password protection, battery-backed real-time clock. Remote diagnosis possible via Ethernet/Internet.

CPU / operating system

32-bit ARM processor, 2 x 800 MHz, 2 GB data storage, expandable via USB. Linux-based real-time multitasking operating system.

Free programmability

Comprehensive, PC-based program-development and test environment. Free programming with RTC WIN in 'C' in compliance with WELMEC software guidelines. Complete software development and test / simulation possible on PC.

Options

RTC WIN

IT9 programming environment

PC COM+

ActiveX component for the communication with PC programs

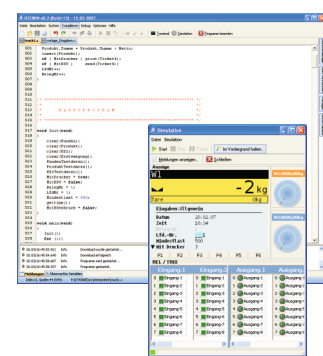
OPC UA Server

Non-proprietary interface according to OPC UA Weighing Technology

MQTT

Open network protocol for machine-to-machine communication (M2M)

RTC WIN



Directives: 2014/30/EU, 2014/31/EU, 2014/35/EU

Standards: EN 45501, OIML R 76-1, EN 61000-6-2, EN 61000-6-4, NAMUR NE21, EN 62368-1

CE EU Type-Examination Certificate as non-automatic weighing instrument

ETL ETL certified in accordance with UL 62368-1 and CSA C22.2 No. 62368-1

FC EMI compliance with FCC Part 15

Other certificates on demand

EtherNet/IP **Modbus**
PROFINET **PROFIBUS**

SysTec Systemtechnik und Industrieautomation GmbH
Tel. +49 (0) 2238 - 9663-0 – www.systemnet.com

Sales and service

Subject to change without notice

ST.2309.2443 IT9_DBE.PDF 06.2024