

IT4000E

Systemtec
Discover smart weighing



W&M Approved Industrial Weighing Terminal

For Weighing And Filling Applications

IT4000E – Industrial Weighing Terminal

Stainless steel housing IP69K

Suitable for harsh environment weighing locations. With mounting brackets for desk-top or wall-mount installation. Integrated power supply unit, sealed cable glands for all cable connections.

Bright color TFT display

With wide viewing angle, large weight display and 4 to 8 input lines.



Simple and fast operation

Via integrated keyboard, function keys and softkeys, optional full-size PC keyboard (cable or Bluetooth).

Stationary or mobile use

With integrated 110–240 V AC power supply unit or via external 12 / 24 V DC battery.

Universal use

The W&M approved IT4000E is designed for applications in the chemical and pharmaceutical industry, in the food industry and in many other sectors of industry. The industrial design with the modular hardware and the powerful standard programs make the IT4000E the ideal choice for:

- Weigh and print applications
- Parts counting
- Vehicle weighing
- Checkweighing
- Filling
- Mobile data capture systems.

Weighing electronics

Adjustable update rate with up to 800 updates / second. High noise immunity of min. 10 V/m against radio frequency interference. W&M approved resolution of up to 6,000 d with max. 80 % preload. Calibration is possible as single or multiple-range (e.g. 3 x 3,000 d) and as multi-interval scale. Internal data archive for the storage of up to 120,000 weighing transactions.

Modular concept

The modular design provides for a variety of configurations and options, such as:

- Enclosures for wall-mount, desk-top or panel-mount installation
- DC or AC power supply
- Connection of scales with analog or digital force transducers
- 10/100 Mbit/s Ethernet interface with integrated web server, WLAN as option
- Integrated USB 2.0 host interface for printer, scanner and USB stick
- Up to 2 serial interfaces, RS232, RS485, RS422 or 20mA CL, for connection of remote displays, label printers etc.

This ensures that the optimal system configuration can be chosen, for stationary as well as mobile use.

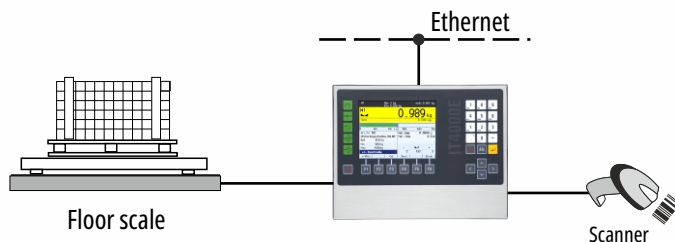
Simple integration

The Linux based operating system with the integrated web server provides the ideal functionality for the integration of the IT4000E into local area networks.

WLAN communication and remote access via internet are also possible.

IT4000E – Standard Applications

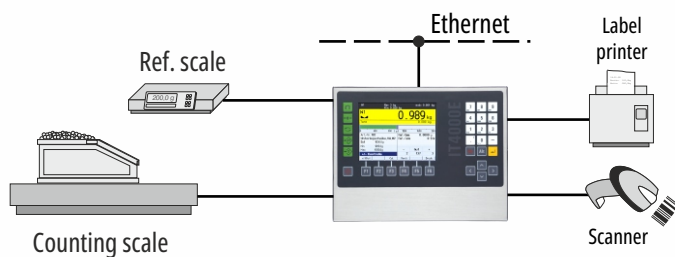
BASIC/COUNT



Weigh and print terminal (*BASIC*)

Capturing of W&M approved weight from one or two scales (e.g. floor, bench, overhead track scale), entry of additional IDs via keyboard or cable / wireless scanner. Transmission of all data to host system over Ethernet or WLAN. W&M approved data archive in the IT4000E or on a PC.

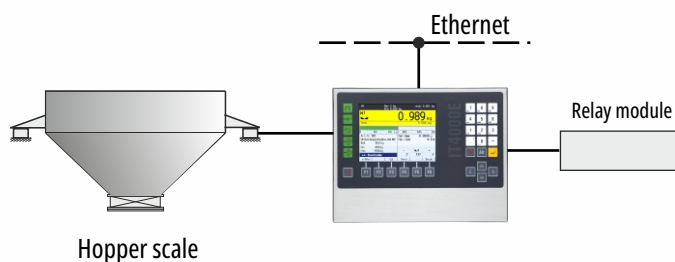
BASIC/COUNT



Parts counting terminal (*COUNT*)

Capturing of piece weight via reference scale, parts counting in weigh-in or weigh-out mode, bargraph display, configurable printout and data transmission. With article file, item counter, memory for totals, automatic taring, plus / minus check and many more functions.

CONTROL/ONLINE



Setpoint controller (*CONTROL*)

Controlling setpoints at hopper or platform scales.

Remote-controlled weighing terminal (*ONLINE*)

Remote control of all weighing, display and printing functions with PC commands via Ethernet. Weight data storage in internal Alibi memory.

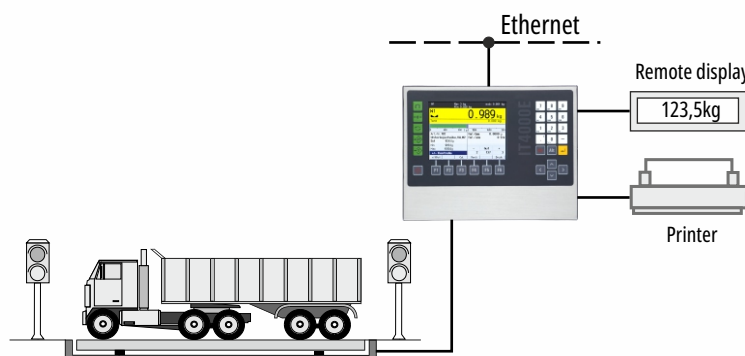
DOS



Filling controller (only for non automatic scales)

Fast and precise two-speed filling of solid materials with preact optimization. Files for product parameters and statistics for 10 products. Data backup and remote diagnosis possible with integrated web server over Ethernet.

TRUCK/ONLINE



W&M approved vehicle scale

First, second and single-pass weighing, entry of IDs, internal W&M approved data archive, configurable print format, data transmission over Ethernet. Optional connection of remote displays, traffic lights and full-size PC keyboard. In ONLINE mode full remote control possible from PC (with W&M approved data storage either in IT4000E or on PC).

IT4000E – Technical Data

Weighing electronics

Connection to scales with analog strain gauge load cells, entry impedance 43 Ohm–3.3 kOhm (e.g. suitable for 8 x 350 Ohm load cells), or via zener barriers, entry impedance 87.5 Ohm–3.3 kOhm (e.g. suitable for 4 x 350 Ohm load cells), W&M approved resolution of up to 6,000 d at a max. of 80 % preload, internal resolution 524,000 d, update rate selectable 50–800 updates / second, smallest load cell signal 0.33 μ V/e. Options: Connection of two scale bases via DUAL-ADM, connection of scale platforms with digital force transducers, external scale interface with ADCBox via RS485, max. cable length: 500 m.

Calibration

Clear-text operator prompting. Setup as single or multiple-range scale with 1, 2 or 3 ranges or as multi-interval scale. Calibration with test weights or by entry of rated output of load cell(s), option for the linearization of the load curve with up to 6 linearization points.

Electrical connection

110 (–15 %) to 240 (+10 %) V AC, 50/60 Hz via integrated power supply unit, option: 12–30 V DC, power consumption max. 20 VA.

Operating temperature

–10 °C (+14 °F) to +40 °C (+104 °F), max. 95 % relative humidity, non-condensing.

Display and keyboard

Bright, high-contrast 5.7" color TFT display, 320 x 240 pixel, with wide viewing angel, large weight display and 4 to 8 input lines. Softkeys, numeric keyboard with multiple key assignment for the entry of alphanumeric data, function keys for zero setting and taring, plus application-specific function keys, connection of optional full-size keyboard via USB (cable or Bluetooth).

Serial interfaces

Up to 2 interfaces, selectable RS232, 20mA CL (passive), RS422 or RS485 for printer, precision scales, remote displays, etc.

Parallel and analog I/Os

4 internal optoisolated inputs and outputs 24 V DC as option, or external relay / transistor module (4 I/Os max.). Optional 15-bit internal analog output.

Ethernet interface

10/100 MBit Ethernet interface with integrated web server, WLAN as option.

USB

USB 2.0 host interface with optional IP67 connector for PC keyboard, scanner or USB stick.

Security

Power-fail-safe storage of data, password protection, battery-backed real-time clock, remote diagnosis possible over Ethernet / Internet.

CPU

32-bit ARM processor, 266 MHz, 0.5 MB data memory.

Options

PC COM+

Active X component for the communication with PC programs.

Relay module

External relay/transistor module with optoisolated inputs and relay or transistor outputs.

Protective cover

Transparent cover to protect the unit from splash and dust.

Ex2/22 version

For installation in Ex zones 2 and 22.

Construction/options:

Desk/wall version



- Stainless steel housing, IP69K, NEMA 4X
- For desk-top or wall-mount installation
- Dimension W x H x D: 330 x 239 x 134 mm (13.0" x 9.4" x 5.3")

Panel-mount version



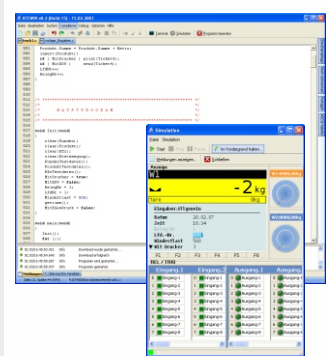
- Stainless steel housing, fascia plate protected to IP69K, NEMA 4X
- Panel-mount installation
- Dimension W x H x D: 285 x 224 x 69 mm (11.2" x 8.8" x 2.7")
- Cutout in panel: 268 x 207 mm (10.6" x 8.1")

WLAN




- Option: WLX module to connect to WLAN networks (802.11b/g)
- Secure encryption selectable


Remote diagnosis




Directives: 2014/30/EU, 2014/31/EU, 2014/35/EU

Standards: EN 45501, OIML R 76-1, EN 61000-6-2, EN 61000-6-3, NAMUR NE21, EN 62368-1


 EU Type-examination Certificate as non-automatic weighing instrument

 NTEP approval as indicating element

 ETL certified in accordance with UL 62368-1 and CSA C22.2 No. 62368-1

 EMI compliance with FCC Part 15

 Measurement Canada: Approval as indicating element

 Russia: Approval as indicating element

SysTec Systemtechnik und Industrieautomation GmbH
Tel. +49 (0) 2238 - 9663-0 – www.systecnet.com

Sales and service

Subject to change without notice

ST.2309.1209 IT4000E_DBE.PDF 11.2020