

Automatic labelling and printing equipment
for self-adhesive labels on the top or side

729
nonstop

**Intelligent equipment
with self-diagnosis**
Industry 4.0

NON-STOP system with double head
synchronized and programmable to each
product format and label that ensures a
continuous labeling without stops

Description

- Semi-real labelling with buffer of labels
- High speed stepper motor drive
- Automatic height adjustment depending on the product
- Structure built in steel protected, folded and welded that brings great weight and rigidity to the machine
- Robustness and reliability for demanding conditions 24h
- Electric cabinet supported on structure, placing the PC panel on a desk accessible to operators
- Control via PLC SIEMENS SIMATIC S7-1200
- 3-colours and soundstatus beacon
- High working capacity 24 hours / day



Innovation, Performance and Reliability
High Quality Labelling and Print&Apply Equipments



label **factory**
PRINT & APPLY EQUIPMENTS

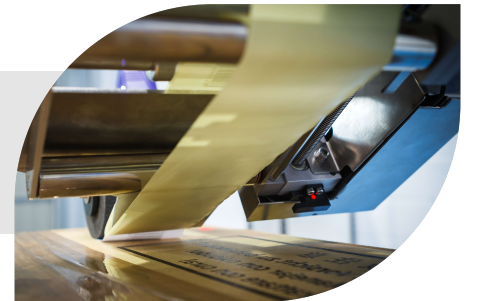
nonstop



Automatic system for collecting previous label format and preparation of new label format



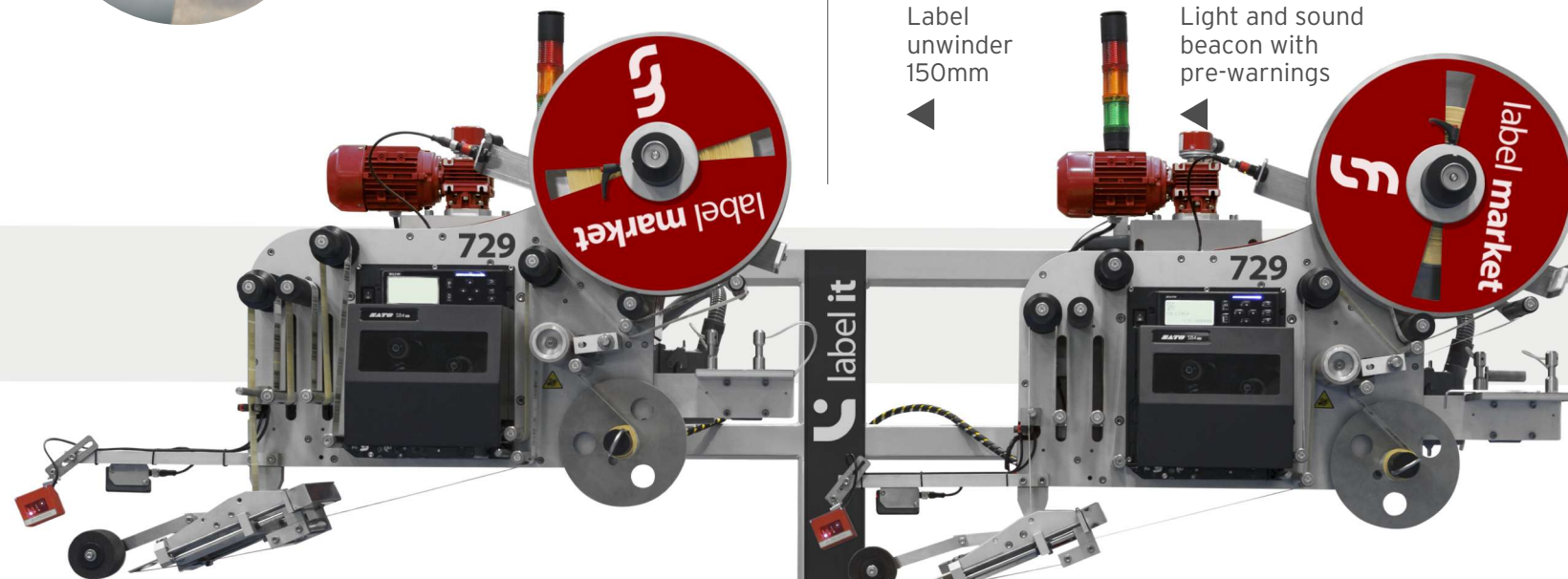
Automatic elevation and positioning system in height



Applied label by dragging and combing



Unique industrial connector for fast head exchange



Label unwinder 150mm

Light and sound beacon with pre-warnings



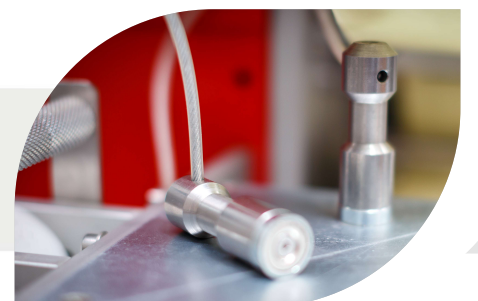
Buffer of labels for high speed application with encoder



Traction system with servo motor

PC Labelling and control management software in all manoeuvres and drive

Manual barcode reader for selection of product



Label splicer for easy reposition of the roll



Independent keypad for local orders to labeller



Code verification and label positioning reader



Control board with Siemens S7-1200 PLC

729

NON-STOP system with automatic change of format and reference

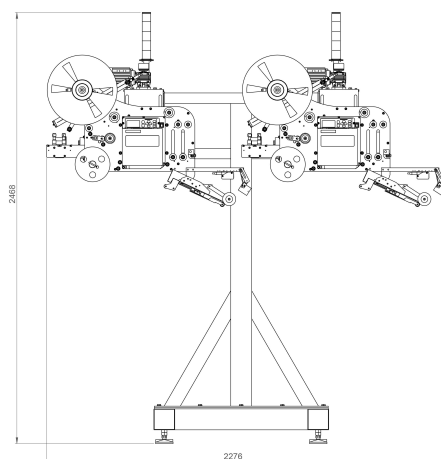
Designed for the correct application of labels on moving products thru a special dispensing plate.

Labelling production

Production (m/min) 60
Minimum size (mm) 20x20
Maximum size (mm) 100x300
Actuator



Serie	labelit 729 ns
Components	
Printer	SATO S84-6EX, ZEBRA, DATAMAX...
Control	Siemens Automata. Step by step driver ever
Interface	Panel PC 15"
Dashboard	Desk (remote keypad). main switch. Stop-rearm. Emergency button. Measurement test / application / printing
Construction	Protected steel and anodized aluminium
Traction label	Stepper motor
Application	Take-off plate
Beacon	Luminous and sound of 3 colours
Head position	Automatic with 250mm encoder (option)
End of roll warning	Warning end of labels
Capacity	
Production	Up to 200 labels / min. 100x100mm
Size	min 20x20 / max. 100x300mm
Application	Superior or lateral
Labelling height	Labelling height
Working sense	Right / left
Unwinder	Outside / inside
Rewinder	Motorized
Communications	
Input signals	Start (presence) / Line OK (customer option)
Output signals	Machine not OK / error to external machine / Application OK
Data interface	Ethernet, RS-232, Parallel
Options	
SAI	With panel PC
Elevation	Automatic 250 mm
Checker reader	Readable barcode
Verification reader	Bar code information
Rewinder kit	Automatic batch change
Splicing kit	Label splicing roll change
Requirements	
Electrical power supply	400VAC +10%, 50Hz
Consumption	5A
Installed potency	1.5 kW
Compressed Air	Not necessary
Dimensions	2.400 x 1.000 x 2.400
Weight	550 kg
Permissible working conditions	5 °C - 35 °C Wet 20%, 90% not condensed



Option: Bar code reader to check the correct and legible placement of each label.
Special system for automatic rewinding of the buffer of labels for changing formats, batches...
Splice system to facilitate the change of consumable. Includes roll end warning system.

AUTHORIZED PARTNER



Parque Empresarial Boroa, 19
Pabellones 13 a 18
48340 AMOREBIETA (Vizcaya)
Telf.: +34 902 900 784
www.labelfactory.eu

Automatic labelling and printing equipment for 3-sided pallets, with high precision, speed, flexibility and reliability thru an arm and three servo-motors

platinum
nonstop

**Intelligent equipment
with self-diagnosis**
Industry 4.0

NON-STOP system with double head synchronized and programmable to each product format and label that ensures a continuous labelling without stops

Description

- Structure built in steel protected, folded and welded of great weight and rigidity with two lower cabinets available: one for external signal terminal block and another for multiple use (manual desktop printers for peak pallets, UPS...)
- The electrical cabinet can optionally include a PC panel or touch screen depending on the needs
- Control via PLC SIEMENS SIMATIC S7-1200
- 3-colours and sound status beacon
- Suction system with sensorized and blown vacuum system that ensures correct positioning of the label on the pallet
- Full cycle with double-sided labelling in 9 seconds

(includes the preparation of labels.) Without counting the time of positioning of pallet that will depend on the customer's line.



Innovation, Performance and Reliability
High Quality Labelling and Print&Apply Equipments



label **factory**
PRINT & APPLY EQUIPMENTS

Thru a flexible suction system

Designed for the application of labels on moving surfaces thru a special take-off plate to ensure the correct application of the label

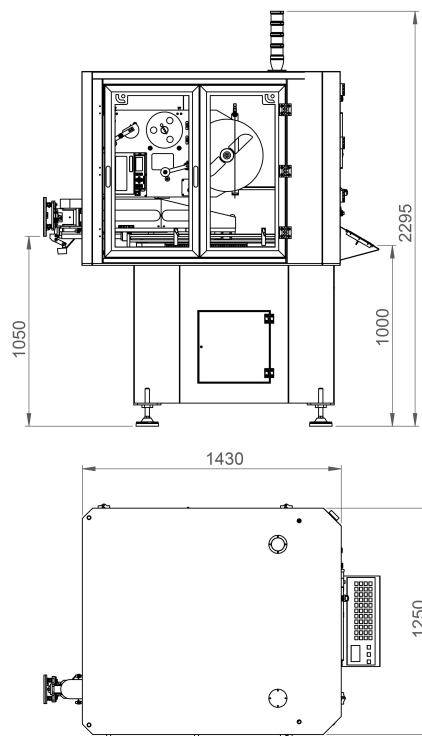
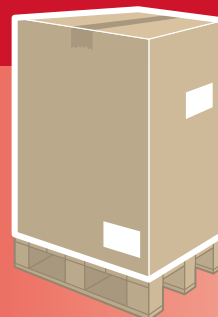
Serie	labelit platinum ns
Components	
Printer	SATO S84-6EX, ZEBRA, DATAMAX...
Control	PLC Siemens. Driver servo LENZE
Interface	10" Touch Screen / Panel PC 15"
Dashboard	Intagrated. Main switch. Stop-rearm. Emergency button Measurement test / application / printing
Construction	Acier protégé et aluminium anodisé
Label detection	Vacuostat SMC
Beacon	Lumineuse et sonore de 3 couleurs
Consumable change access	Signal d'arrêt
Capacity	
Production	200 pallet/h (2 faces with label preparation) Cycle 1 face = 3 s, 2 faces = 9s, 3 faces = 12 s
Arm movement	X=500mm, Y=515mm, Rotation=180° /Option Y= 715mm
Suction plate	148 x 210 mm
Application	3 faces (Frontside - Lateral - Backside)
Labelling height	1.050 mm
Working sense	Right / Left
Dispenser	External / internal
Rewinder	Motorized
Communications	
Input signals	Start (presence) / Line OK (customer) / Label preparation
Output signals	Machine not OK / error to external machine / Application OK / Security / Arm in departure
Options	
SAI	With panel PC
Keyboard	Industrial with panel PC
Additional printer	On a removable tray
Elevation	Automatic 400 mm
Checker reader	Readable barcode
Verification reader	Bar code information
Requirements	
Electrical power supply	220VAC +10%, 50Hz
Consumption	5A
Installed potency	1.5 kW
Compressed Air	6 bar - 150 l/min
Dimensions	1.000 x 11.430 x 2.300
Weight	850 kg
Permissible working conditions	5 °C - 35 °C Humidity 20%, 90% not condensate

Option: Bar code reader to check the correct and legible placement of each label.
Special system for automatic rewinding of buffer of labels for changing formats, batches...
Label splicer for easy reposition of the roll. Includes roll end warning system.

AUTHORIZED PARTNER

Labelling

Production (m/min) 220
Minimum size (mm) -
Maximum size (mm) 148x210
Actuator



Parque Empresarial Boroa, 19
Pabellones 13 a 18
48340 AMOREBIETA (Vizcaya)
Telf.: +34 902 900 784
www.labelfactory.eu